



Lease Proposal

La Rambla Plaza Suite 131, Ponce PR



606 Ave. Tito Castro, Ste. 601
Ponce, PR 00716-0218

Ph. 787.840.1313 Fax: 787.843.5065

Email: fbadmin@fbpropertygroup.com

www.fbpropertygroup.com



La Rambla Plaza

The Right space for you!

La Rambla Plaza is conveniently located at Tito Castro Avenue (PR-14), a prime commercial district with great access to all the amenities associated with being within a stable and growing area with many successful businesses, corporate offices and a highly-trafficked area.

This unique site has public transportation on-site and close proximity to major arterial roads such as:

- Las Américas Ave. (PR-163)
- Luis A. Ferré Highway (PR-52)
- PR-10, Ponce-Adjuntas-Arecibo
- PR-12, Ave. Santiago de los Caballeros



La Rambla Tower

La Rambla Tower is a modern and elegant six story Class A building that complies with all current codes and regulations in accordance with the Health and Fire Departments, also with all requirements established by the ADA Act. La Rambla Plaza provides ample parking space and a total of 12 parking spaces for people with disabilities. The Tower has two (2) elevators with *Braille* system, guards and security cameras 24/7, access control systems with card reader, perfect for a better control when working outside of regular hours.

Property at a Glance

Some of the amenities of this prime office space are:

Located on the first (1st) floor of La Rambla Plaza

1,667 square feet

4 private office spaces & 1 conference room

24 x 24 ceramic tiles

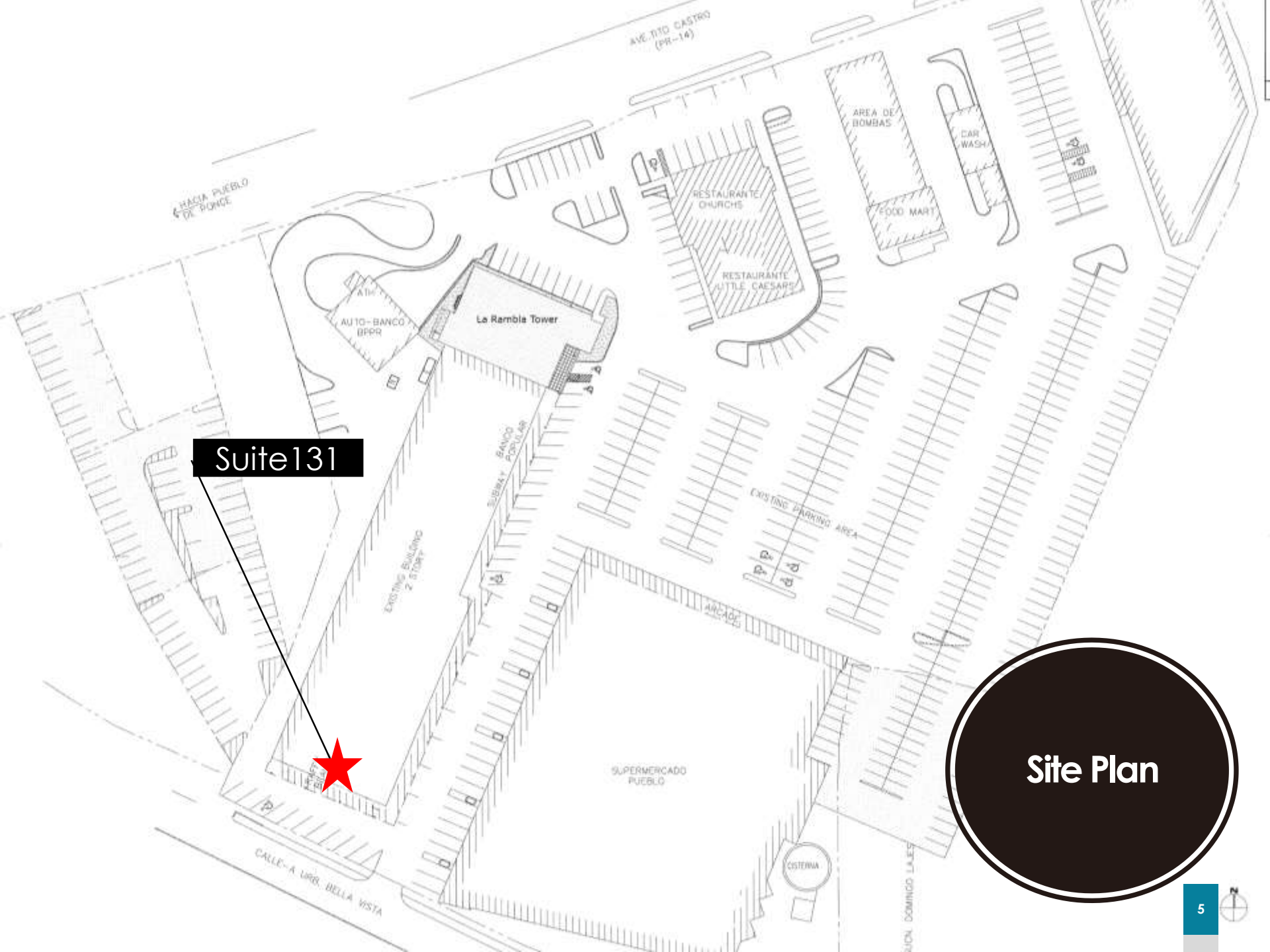
Two bathrooms

Lounge area

New air conditioning system

Access to loading and private parking area



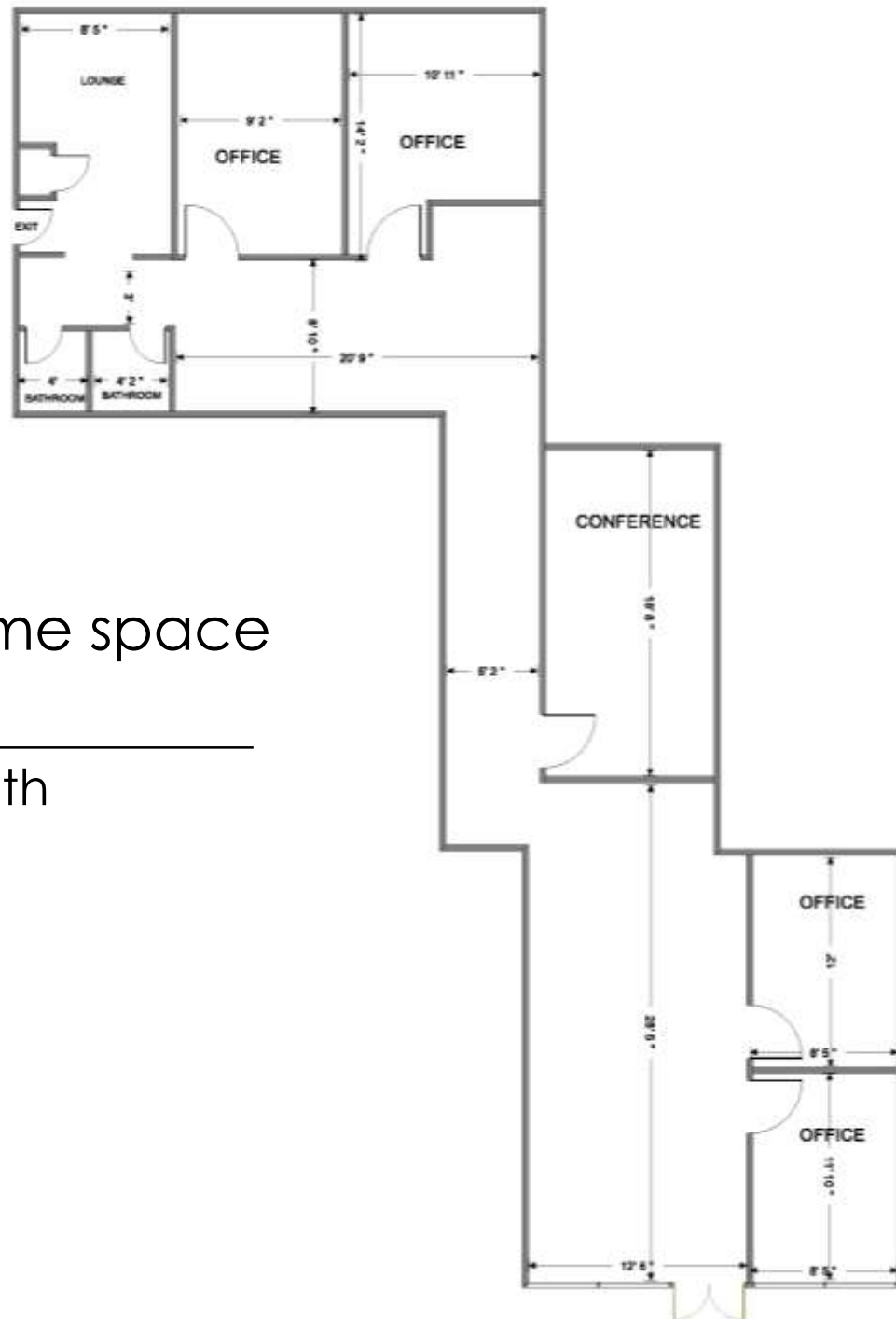


Suite 131

Site Plan

Enjoy this prime space
offered at:

\$3,500 per month



Aerial



GPS Coordinates

18.025922,
-66.598989

PR-14

Site



360° Google Street View



Please call for details:

606 Ave. Tito Castro, Ste. 601

Ponce, PR 00716-0218

Ph. 787.840.1313 Fax: 787.843.5065

Email: fbadmin@fbpropertygroup.com

www.fbpropertygroup.com

